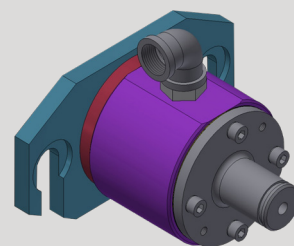
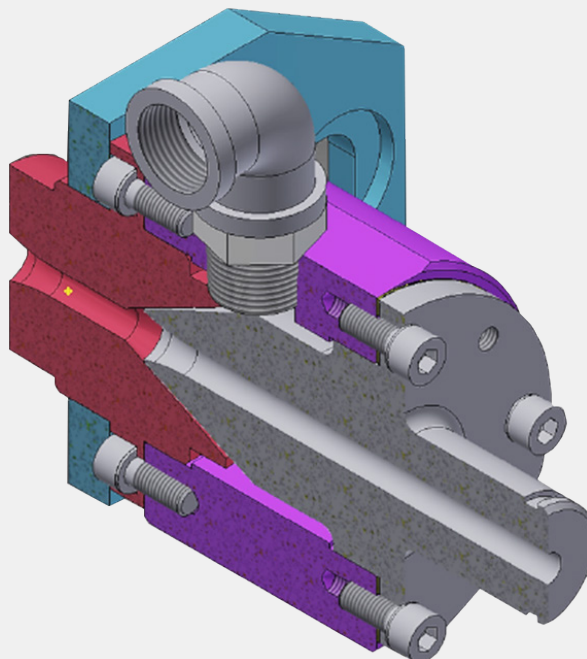


NEW AIR DRYER SOLUTION FOR FAST BLOCKS

Optimized Dryer design with simplified consumable solution



A-DR

>BGV, Multidrive,
PFB, TMB, CSB<

The purpose of this flyer is to inform Danieli customers on the new Air Dryer solution implemented about Danieli Fast Blocks.

Optimized design ensure improved dryer efficiency in combination with easier and less expensive replacement of wear consumable parts.

The new Dryer solution has been successfully field tested; the positive results highlighted the following beneficial tips:

- Air flow nozzle has been moved in the middle of the dryer body in order to increase efficiency of air flow and reduce air consumption
- Better material guiding due to smaller entry funnel
- More efficient air flow and water outlet break
- Significant reduction of the air whistle noise
- Easy setting of air flow rates by using the shims thickness pack
- Dryer fixing flange has been separated from the entry guide (consumable part)

- Possibility to use long life steel grades for entry and exit guide
- Modified the centerings of the entry-exit guides on the dryer body
- Symmetrical central body design
- Easier assembly of an air piping/fitting on dryer body.

The new Dryer is perfectly interchangeable with previous Dryer solutions.

