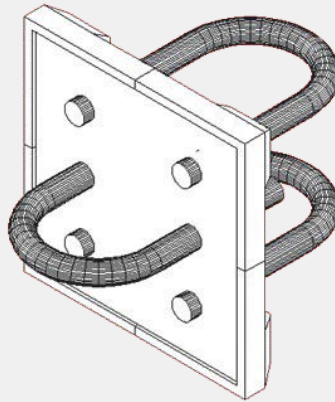
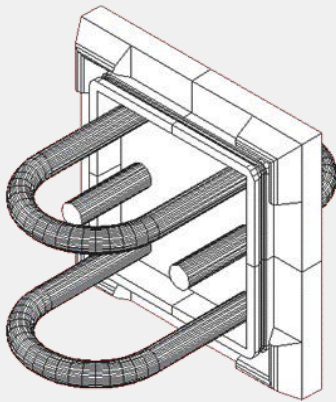


QUICK SEALING DEVICE



QSD
Safe
Quick
Reliable

BENEFITS

- **Safe and perfect union between cast steel and dummy bar preventing liquid steel from leaking**
- **Risk free by avoiding handling operations between tundish and mould**
- **Quick operation by saving time in strand preparation works**
- **Perfect self-positioning**
- **Applicable to any existing CCM**

Main Features

- The Quick Sealing Device protects the dummy bar head from liquid steel
- A customized solution that cools the steel down, makes a firm connection with the solidified steel and is firmly linked to the dummy bar head at the same time— Properly adjusting and fitting, avoiding damages to the mould
- Easy and fast release

- The Quick Sealing Device standard range is for billet dimensions from 120x120 mm, 4.725" square, to 200x200 mm, 7 7/8". Customized solutions may be also provided case by case
- All the unit has been designed to protect the copper mould tube during dummy bar insertion and to provide a perfect seal in order to avoid any outflow of liquid steel

Connection

- The QSD is ready to be placed inside the cooling chamber (below the mould) immediately after being connected to the dummy bar
- This position provides an easy and controlled insertion into the mould and avoids dangerous manual manipulations— The limited weight of the QSD complies with standard safety regulation for the manual handling operations

